

# INSIGNIA™

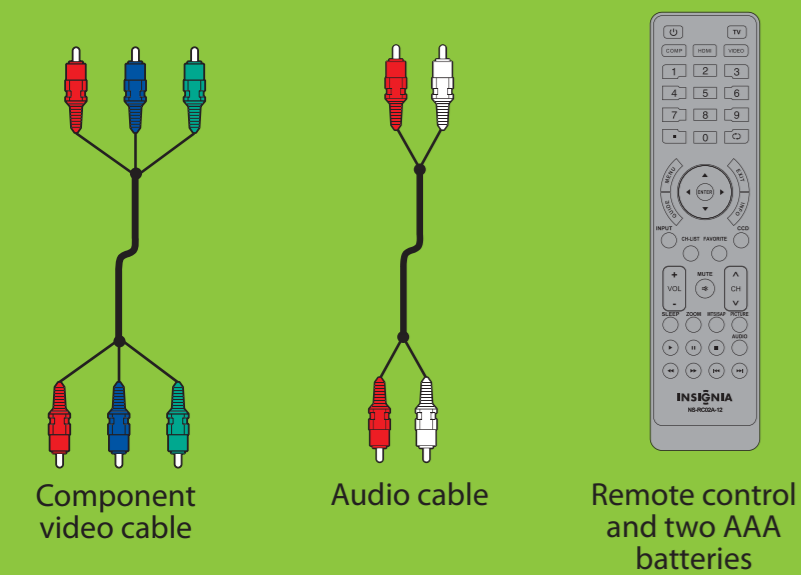
46" 1080p LED-LCD HDTV

## QUICK SETUP GUIDE

NS-46E790A12

### Thank You

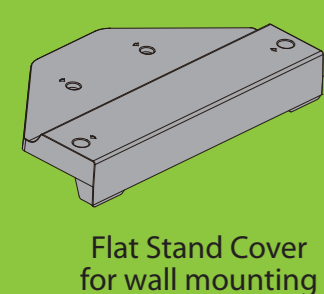
for purchasing this fine Insignia television. We hope you enjoy the quality and reliability of this product for years to come.



Component video cable

Audio cable

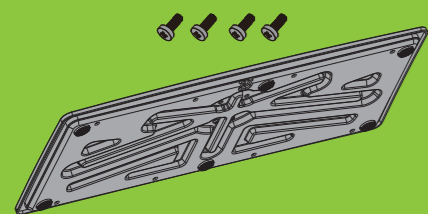
Remote control and two AAA batteries



Flat Stand Cover for wall mounting



Cleaning cloth



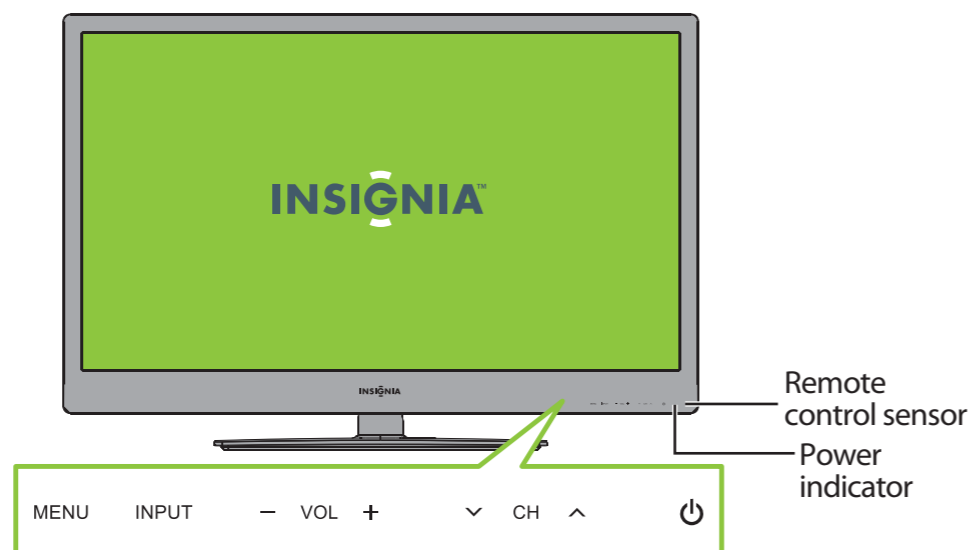
TV stand and 4 screws

### WE ARE GOING GREEN!

A copy of your *User Guide* is not provided in the box but is available online. Go to [www.insigniaproducts.com](http://www.insigniaproducts.com), click **Support & Service**, enter your model number in the *Product Search* field, then click **Search**.



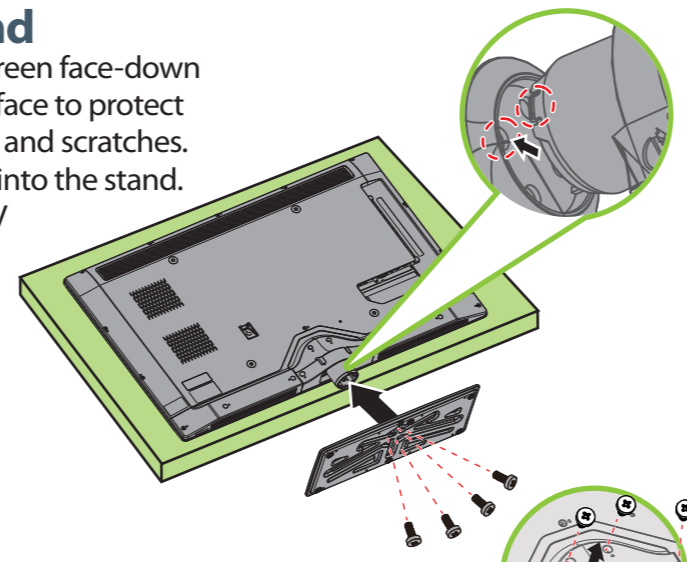
### Front features



Remote control sensor  
Power indicator

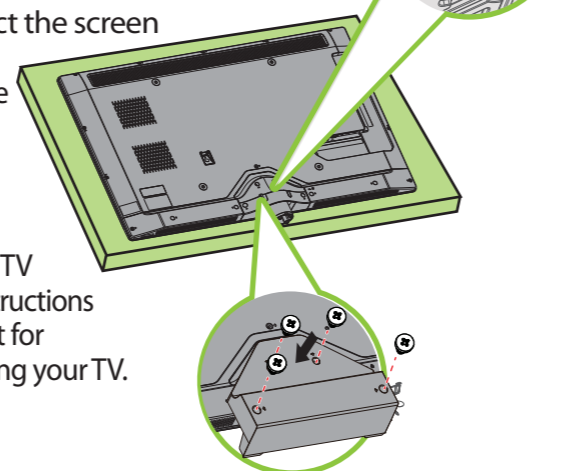
### Installing the stand

- Carefully place your TV screen face-down on a cushioned, clean surface to protect the screen from damages and scratches.
- Align and insert the base into the stand.
- Secure the stand to the TV with the four provided screws.



### Installing a wall-mount bracket

- Carefully place your TV screen face-down on a cushioned, clean surface to protect the screen from damages and scratches.
- Remove the four screws that secure the cover, then remove the cover.
- Secure the flat stand cover to the back of your TV using the four screws you just removed.
- Attach the wall-mount bracket to your TV using the mounting holes. See the instructions that came with the wall-mount bracket for information about how to correctly hang your TV.



### Warning

This apparatus is intended to be supported by a UL Listed wall mount bracket.

### Identifying cables

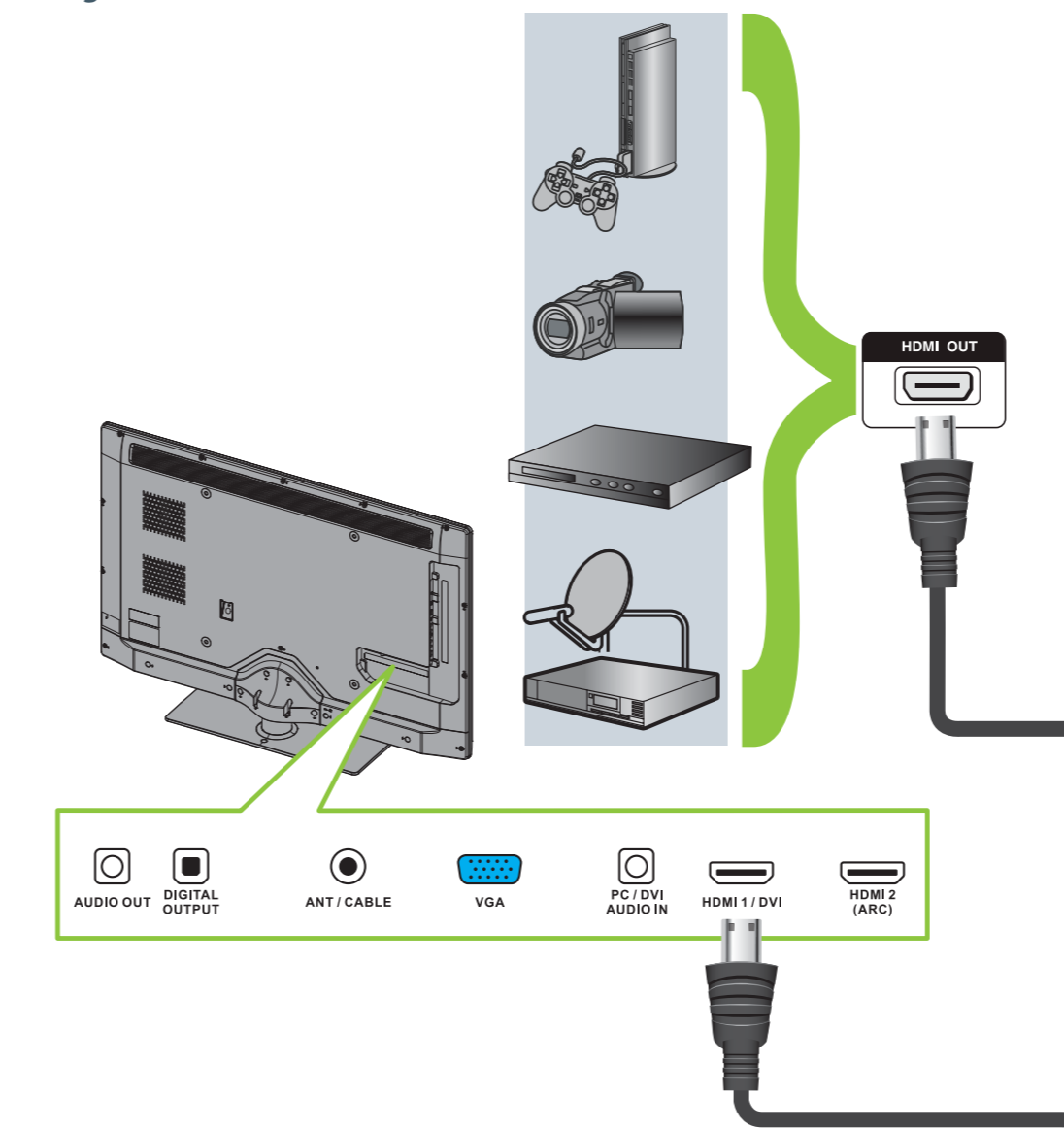
Your TV has several connection types for connecting devices. For the best video quality, connect a device to the best available connection.

| Connection type                  | Video quality | Cable connector |
|----------------------------------|---------------|-----------------|
| HDMI video/audio                 | Best          |                 |
| OR                               |               |                 |
| Component video and analog audio | Better        |                 |
| OR                               |               |                 |
| Composite video and analog audio | Good          |                 |

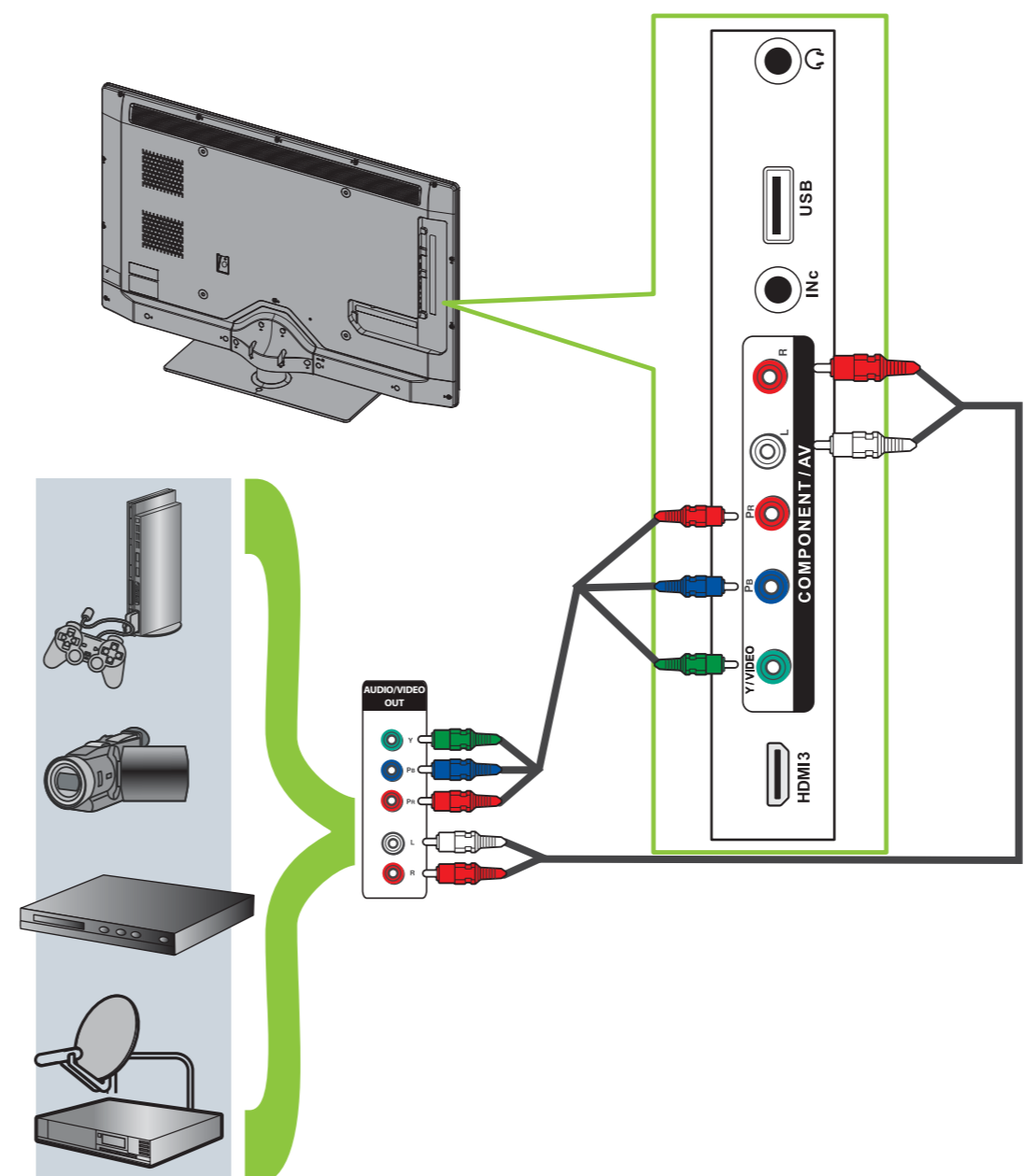
You can use the HDMI 1 jack to connect a DVI device to your TV. You need to attach an HDMI-to-DVI adapter to the end of the HDMI cable that connects to the DVI device's jack.

### Connecting a DVD or Blu-ray player, cable box, satellite receiver, camcorder, or game station

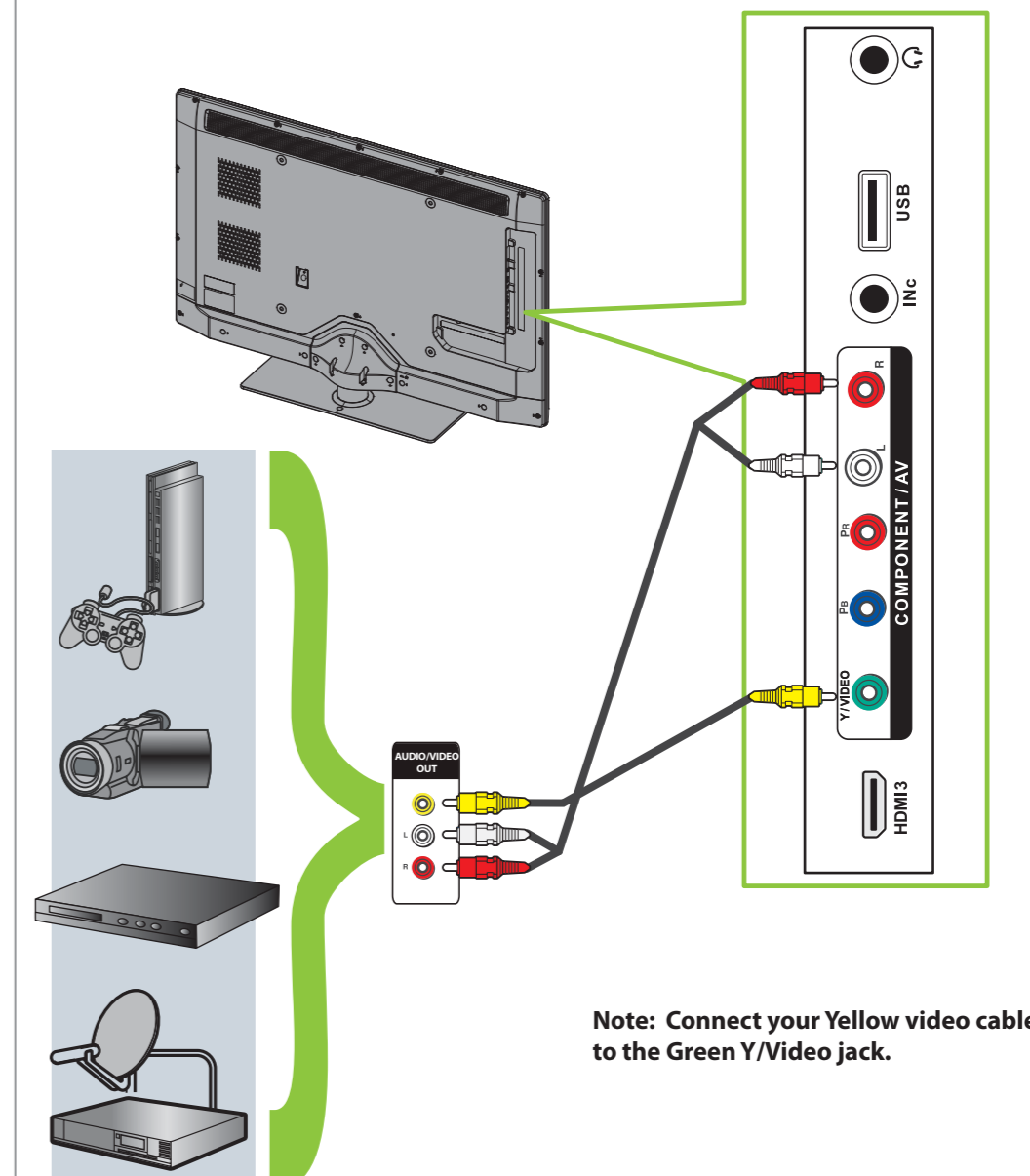
Using an HDMI cable (best)



### Using component cables (better)



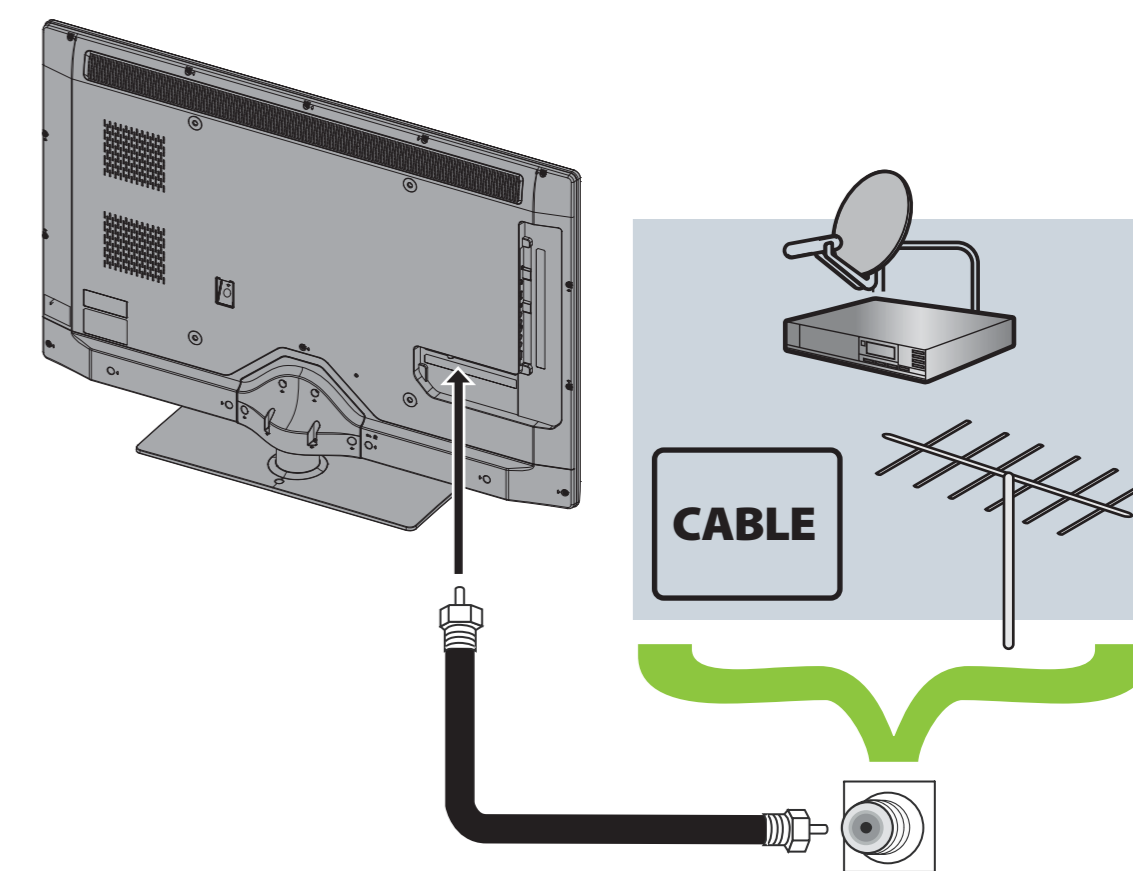
### Using composite cables (good)



Note: Connect your Yellow video cable to the Green Y/Video jack.

### Connecting an antenna/cable wall jack

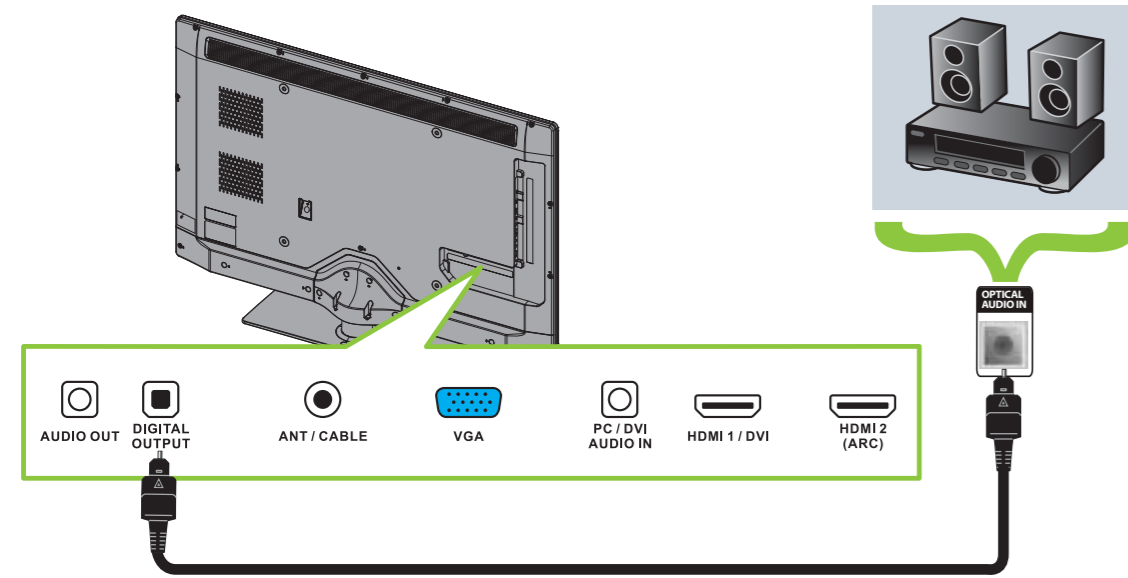
Connect a coaxial cable (not included) to the ANT/CABLE jack on the back of your TV and to the Antenna/Cable wall jack.



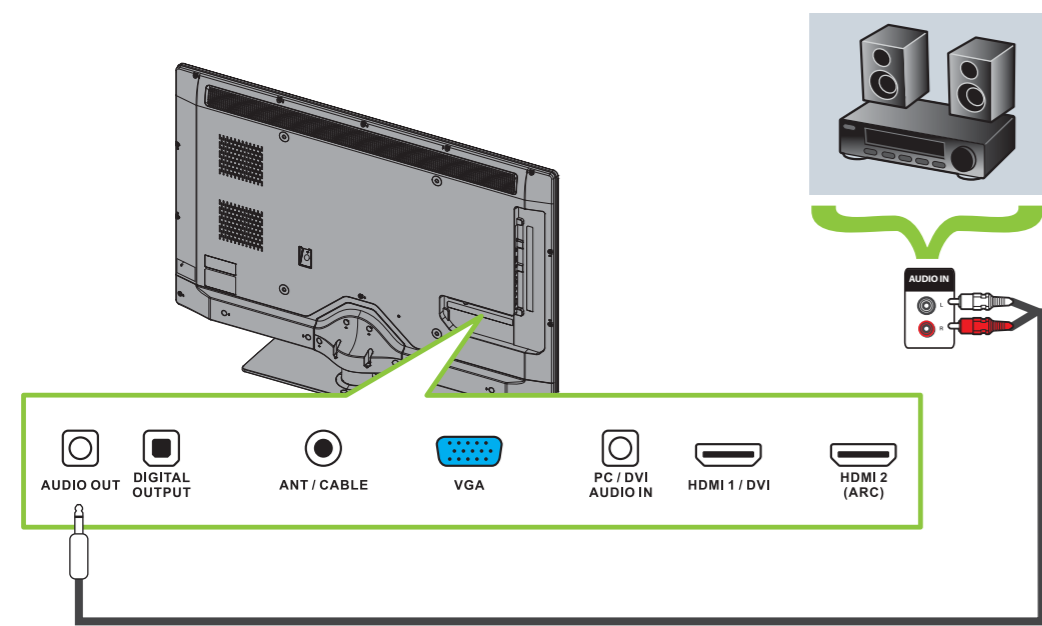


### Connecting a Home Theater System

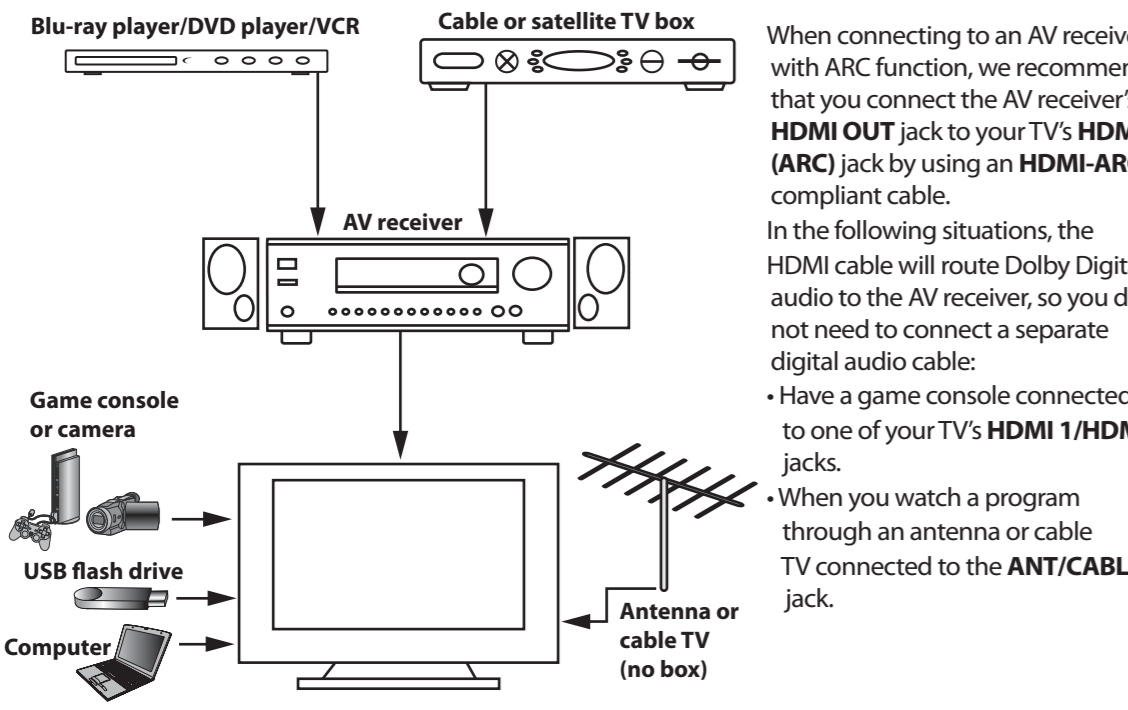
Using Digital audio



Using Analog audio



### Connecting a home theater system with multiple devices



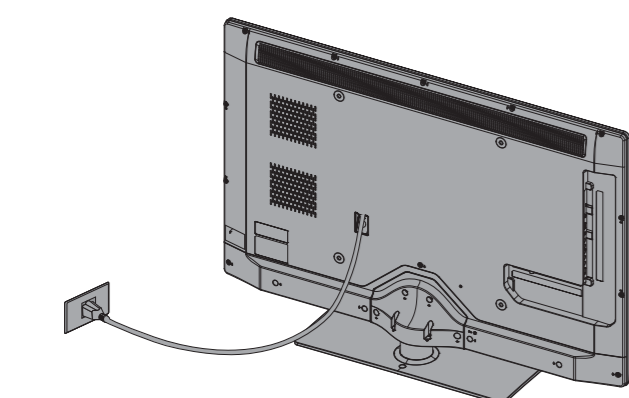
When connecting to an AV receiver with ARC function, we recommend that you connect the AV receiver's **HDMI OUT** jack to your TV's **HDMI 2 (ARC)** jack by using an **HDMI-ARC** compliant cable.

In the following situations, the HDMI cable will route Dolby Digital audio to the AV receiver, so you do not need to connect a separate digital audio cable:

- Have a game console connected to one of your TV's **HDMI 1/HDMI 3** jacks.
- When you watch a program through an antenna or cable TV connected to the **ANT/CABLE** jack.

### Connecting power

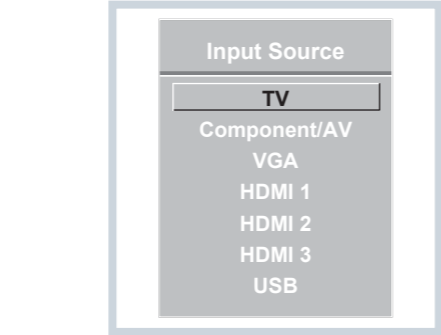
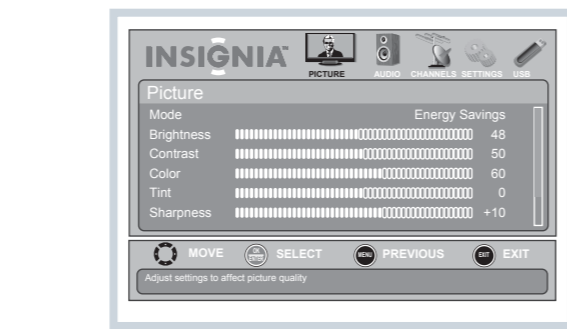
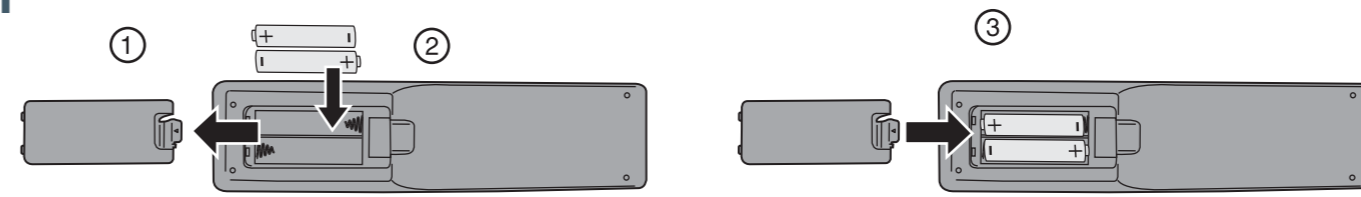
Plug the AC power cord into a power outlet.



**Note**  
The AC power cord is attached on the back of the TV when shipped, and cannot be pulled out from the TV.

### Setting up and using your remote control

- 1 Press the release button on the back of the remote control to remove the battery compartment cover.
- 2 Insert two AAA batteries into the battery compartment. Make sure that the + and - symbols on the batteries match the + and - symbols in the battery compartment.
- 3 Replace the cover.



#### Aspect ratio options

- Normal:** Displays the original aspect ratio with black bars vertical on the left and right hand side of the screen. Display 4:3 if input source is 480i, 480p. Display 16:9 if input source is 720p, 1080i, 1080p.
- Zoom:** Expands the image to fill the screen. The top and bottom of the image may be cropped.
- Wide:** Use this option to view content recorded in a 16:9 (wide-screen) aspect ratio.
- Cinema:** Stretches the image at the edges, but keeps a clear image in the center.
- Auto:** Automatically adjusts the image based on the screen size and the TV program. **Note:** Auto is only available when Auto Zoom in the CHANNELS menu is set to On.

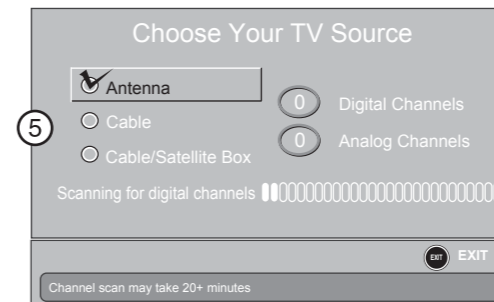
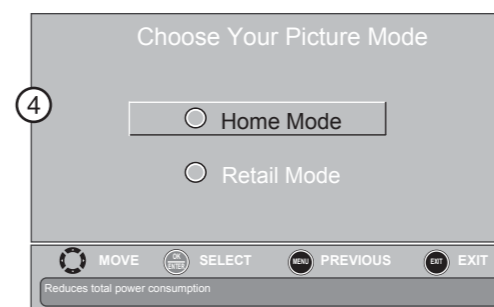
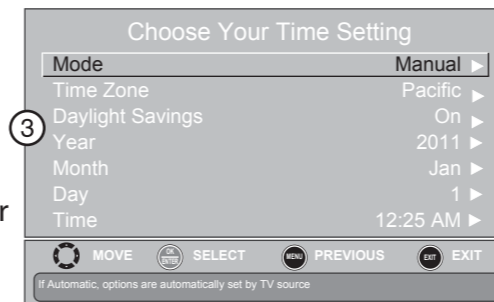
### Programming your remote control

To program your universal remote control to work with your new Insignia TV, see the table for common codes. If you have problems programming your remote or need a different remote control code, visit [www.insigniaproducts.com](http://www.insigniaproducts.com) for the latest remote control code information.

| Universal remote controls |            | Universal remote TV codes |   |   |   |   |            |  |              |                                       |      |            |
|---------------------------|------------|---------------------------|---|---|---|---|------------|--|--------------|---------------------------------------|------|------------|
| One for All               | Philips    | RCA                       | Sony  | Cablevision                                 | Charter   | Comcast   | Cox        | Direct TV  | Dish Network | Time Warner                           | Tivo | Verizon    |
| 0054                      | 0198, 0490 | 135                       | 068, 069, 078, 096, 100, 164, 168, 229, 026 | 068, 069, 078, 096, 100, 164, 168, 229, 026 | 2002, 1204, 1423, 1517, 0171, 1963, 0463, 1463, 0842, 1326, 167, 415, 424, 450, 456, 461, 507, 523, 567, 577, 586 | 10171, 11204, 11326, 11463, 11517, 11641, 11780, 11785, 11892, 11963, 12002 | 1326, 1463 | 10171, 11204, 11326, 11517, 11564, 11641, 11963, 12002 | 720          | 400, 450, 461, 456, 10463, 1463, 0463 | 0091 | 0198, 0490 |

### Turning on your TV for the first time

- 1 Connect the power cord to a power outlet, then press **Power**. The power indicator turns blue and the *Choose Your Menu Language* screen opens.
- 2 Press **▲** or **▼** to highlight a language, then press **ENTER**. The *Choose Your Time Setting* screen opens with **Mode** highlighted.
- 3 Press **◀** or **▶** to select **Auto** or **Manual**. If you select **Auto**, the date and time are set automatically from a digital TV signal. If you select **Manual**, you can manually set the date and time. Press **ENTER**. The *Choose Your Picture Mode* screen opens.
- 4 Press **▲** or **▼** to highlight **Home Mode** or **Retail Mode**, then press **ENTER**. If you select **Retail Mode**, a message asks you to confirm your selection. Select **Yes** or **No**. **Retail Mode** is not an energy-saving mode. The *Choose Your TV Source* screen opens.
- 5 Press **▲** or **▼** to highlight **Antenna**, **Cable**, or **Cable/Satellite box**. If you select **Antenna** or **Cable**, your TV scans for available channels. The scan may take several minutes. **If you select Cable/Satellite box, your TV does not scan for channels.**
- 6 To watch TV, press **INPUT**, then press **▲** or **▼** to select the video input source for your TV signal. For example, select **HDMI** if your TV is connected to a cable/satellite box using an HDMI cable or select **TV** if your TV is connected to an antenna or cable/satellite using a coaxial cable.



Two-year limited warranty

Visit [www.insigniaproducts.com](http://www.insigniaproducts.com) for details.

### Need additional help?

See your *Online User Guide*! This comprehensive guide includes everything from basic how-to steps to more advanced features. A copy of your *User Guide* is not provided in the box but is available online. Go to [www.insigniaproducts.com](http://www.insigniaproducts.com), click **Support & Service**, enter your model number in the *Product Search* field, then click **Search**.

Check out our online **community forum** at [www.InsigniaProducts.com/community](http://www.InsigniaProducts.com/community) for helpful information from other Insignia TV owners.

### We're here for you

[www.insigniaproducts.com](http://www.insigniaproducts.com)

For customer service, call:

**877-467-4289 (U.S./Canada markets)**

Distributed by Best Buy Purchasing, LLC  
7601 Penn Avenue South, Richfield, MN USA  
55423-3645

© 2011 BBY Solutions, Inc.

All rights reserved. INSIGNIA is a trademark of BBY Solutions, Inc. Registered in some countries. All other products and brand names are trademarks of their respective owners.

### WE ARE GOING GREEN!

A copy of your *User Guide* is not provided in the box but is available online. Go to [www.insigniaproducts.com](http://www.insigniaproducts.com), click **Support & Service**, enter your model number in the *Product Search* field, then click **Search**.

